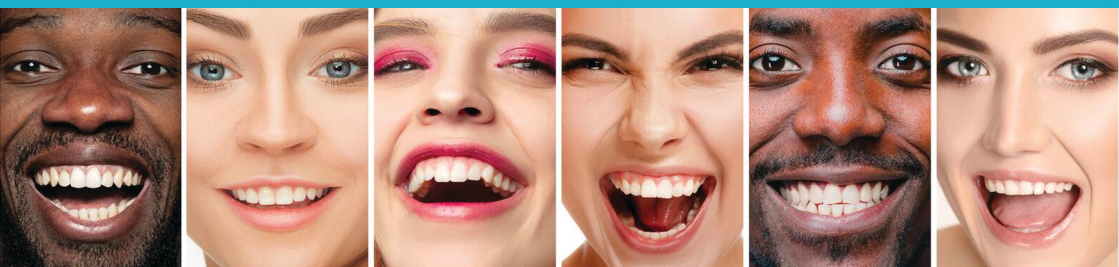




Invisalign and you



Your consultation

Name:

Date of consultation:

Thank you for enquiring about Invisalign orthodontic services. An investment in straighter teeth brings more than just cosmetic benefits; it is also an investment in your health. Mouths with straight teeth are easier to keep clean, making it easier to avoid problems like tooth decay and gum disease.

At your consultation today we discussed the following:	Tick when complete
How you feel about your smile	<input type="checkbox"/>
Invisalign - what it is and how it works	<input type="checkbox"/>
How Invisalign could help you	<input type="checkbox"/>
What you would need to do to make it work for you	<input type="checkbox"/>
How long it would take to complete the treatment	<input type="checkbox"/>
What other treatment options are available to you	<input type="checkbox"/>
How much treatment would cost, and how you can pay for it	<input type="checkbox"/>
What will happen next if you decide to proceed with treatment	<input type="checkbox"/>

I think that Invisalign would help you achieve the smile you want.

Your ClinCheck Treatment Plan will cost £.....
I estimate the whole cost of your treatment will be £..... to £..... This will include the cost of your ClinCheck Treatment Plan.
I estimate that your treatment will take about to months to complete.





What is Invisalign?

The Invisalign system uses a series of almost invisible, removable plastic trays or 'aligners' which fit snugly over your teeth, progressively straightening them to create a 'picture-perfect' smile.

The aligners are made to fit your teeth - and your teeth only - using state-of-the-art computer imaging technology. Each is slightly different from the next, meaning that your teeth can be gently moved and realigned over the course of the treatment. They are comfortable and removable, so patients can eat and drink as normal during treatment, and can keep their mouths clean and fresh.

As the world's most advanced orthodontic treatment, Invisalign has transformed the smile of more than 10 million people living in 45 countries worldwide.

But we wouldn't expect you to know that, as it is almost completely invisible. So most people can't spot that their friends, family members or work colleagues are wearing it.

Invisalign's invisibility makes it an ideal treatment for adults and for teenagers that are very self-conscious, enjoy sports, or play wind instruments.

How does Invisalign work for you:

- ✓ You will need to have attachments bonded to your teeth. These tooth-coloured lumps of filling material are very small, are polished off at the end of the course of treatment, and do no long-term harm to the teeth. They are individually designed for each of your tooth movements by Invisalign's state-of-the-art computer imaging software, ensuring this treatment is more



- ✓ We may need to make room to move your teeth by removing very thin sections of tooth enamel to create more of a gap between them. Invisalign's state-of-the-art computer imaging software allows very accurate measurements to be taken, ensuring that no more or less is removed than is required. The process is painless and does no long-term damage to the teeth.

- ✓ You will need to wear a retainer. Once you have finished treatment, your teeth will want to go back to their original position. This can happen at any time in your life, regardless of the method used to straighten your teeth. To prevent it you will need to wear a retainer every night for 12 months, and every few nights for life. These are made from clear plastic and look like a thicker version of the aligners. They are guaranteed for 12 months and most people replace them every three to four years.

At your complimentary consultation, your dentist will explain all these elements of the process in detail, and show you what they will look like. You will also have the opportunity to ask any questions that you might have.



Is Invisalign the only way to straighten my teeth?

Invisalign is not the only method of straightening teeth, and it doesn't work for everyone. It gives a 'picture perfect smile', which means that your teeth will look great in normal social situations or in photos.

There are other ways of improving the look of your smile. If you would like to find out more about the other treatment options available to you, please give us a call at the practice, and we can discuss the best option for your requirements.



I want to go ahead with Invisalign. What next?

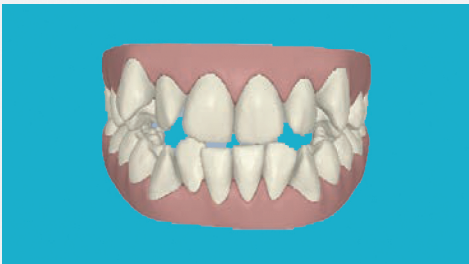
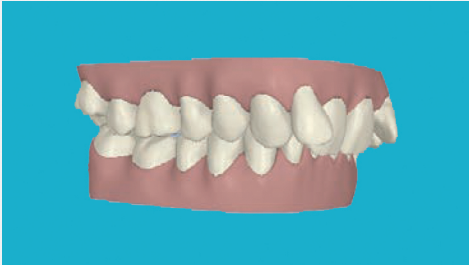
If you decide to proceed with Invisalign, the next stage is to create a personal treatment plan, called a 'ClinCheck'. We will take a digital scan, photos and x-rays. We will use these to create a computerised, 3D model of your teeth and a plan for improving your smile. This will show the series of movements your teeth will go through over the course of the treatment, so you can see how your smile will look at the end of your Invisalign treatment before it has even begun.

Once we have scanned your teeth for your ClinCheck, you will receive a comprehensive treatment plan, which covers every detail of your treatment from start to finish. You will also be sent a video of your teeth moving at every stage. In your treatment plan it will cover a fixed price for your full treatment with no hidden costs and we can discuss a payment plan if needed.

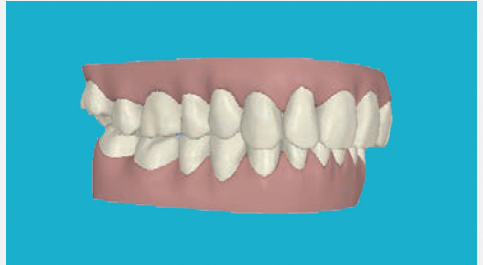
To book an appointment for a 'ClinCheck', please give us a call at the practice.

Example of patients

Before



After



These images show the difference Invisalign can make to a smile. At your ClinCheck your dentist will obtain all the information needed to show you how your teeth look now and how they will look by the end of the treatment.



Patients Stories

Invisalign has transformed the smile of more than 10 million people living in 45 countries worldwide. Here are just a few of their stories.

David's story

"I wore metal braces as a child. I found they were really uncomfortable, made me very self-conscious, and I don't believe they made much difference to my teeth.

"The turning point was when my aunt introduced me to Invisalign. It was amazing to see how, with Invisalign's computer treatment software, my teeth would be expected to straighten over time.

"The results have been beyond my expectations. My teeth are now much straighter, and I love my new smile."



Marie's story

"I had been conscious of my gappy smile for as long as I could remember, and really wanted to do something about it. But, as a teacher, I'm under the constant scrutiny of young children so, as you can imagine, fixed braces just weren't an option for me.

"The Invisalign treatment surpassed my expectations. The students and even my own children couldn't tell when I was wearing the aligners. But what impressed me most about the Invisalign treatment was that it didn't interfere with my daily oral hygiene routine. Having had metal braces before, the removable aligners were a welcome change. I didn't have to worry about what to eat.



"As a teacher, confidence is everything. Since having the Invisalign treatment, the changes to my teeth have brought my back to my old self again and I'm a happier person. At my age, I thought it was too late to fix my teeth, but Invisalign has helped give me a smile I can be proud of."

Frequently asked questions

Is Invisalign a new treatment?

No. More than 10 million patients worldwide have new smiles thanks to Invisalign.

Is it just available in the UK?

Invisalign is sold in more than 45 countries across Europe, the USA, Canada, China, Japan, Asia Pacific, the Middle East, Africa and Latin America.

Can any dentist treat patients with Invisalign?

No. Before treating patients with Invisalign, orthodontists and dentists must attend specialised training. There are more than 82,000 Invisalign-trained dentists and orthodontists worldwide.

What are the aligners made of?

Invisalign's aligners are made of a strong, medical-grade thermoplastic that has been uniquely developed for the treatment. They are virtually invisible, custom-made for each patient, and fit snugly over the teeth.

How long does the treatment take?

It depends on the complexity of the tooth movements required, with most treatments lasting between 4 to 9 months. Your dentist will advise you further.

How often will I need to see my dentist once I start treatment?

Patients normally need to visit their dentist for a short appointment every four to six weeks to ensure treatment is progressing as planned and to receive their next set of aligners. Your dentist will tell you more.

Is the treatment painful?

Some people experience very minor discomfort when they insert a new aligner. This feeling of pressure is completely normal, and is a sign that the aligners are working. The discomfort normally goes away after a couple of days.

Can Invisalign correct problems like overbites and gaps between teeth?

Overbites can be improved in most cases. Your dentist tell you if the treatment will work for you. Spaces between teeth are usually easy to close with Invisalign.

Since my braces were removed, my teeth have shifted. Can Invisalign reverse this?

Many Invisalign patients have previously had fixed braces at some point in their past. Invisalign can usually correct any relapse that occurs after braces.

What if I have a bridge or a crown?

Bridges firmly link two or more teeth together. This means they offer significant resistance to tooth movement. Crowns do not usually affect the Invisalign treatment, unless the attachments for the aligners need to be bonded onto them. Your dentist can give you further advice.

I am currently wearing braces. Can I switch to Invisalign?

A large number of patients are treated with a combination of fixed braces and the Invisalign system. Your dentist can advise you further.

Once the treatment is complete, will I need to wear a retainer?

Yes. A retainer will keep your teeth stable in their new position. If you do not wear it, your teeth may move back to their original positions.

Are there any restrictions on what I can eat while I am being treated?

No, unlike with traditional wires and brackets, you can eat whatever you like during the Invisalign treatment. This is because you remove your aligners to eat and drink. It is important that you brush and floss your teeth after each meal, before you re-insert your aligners.

How often do I need to wear the aligners?

Aligners should be worn at all times, except when eating, brushing or flossing teeth.

Will the aligners affect speech?

Most patients report no effect on their speech, but there can be a short adjustment period.

Can I smoke while wearing the aligners?

Smoking is discouraged, as it can stain or discolour the aligners.

Can I chew gum while wearing aligners?

Chewing gum is not advised, as it can stick to the aligners. The aligners should be removed for all meals and snacks.

What is the best way to clean my aligners?

You should brush and rinse your aligners in lukewarm water, and use Invisalign Cleaning Crystals or special cleaning tablets. You should brush your teeth after each meal before you re-insert your aligners.

If you have any other questions, please ask your dentist at your complimentary Invisalign consultation.